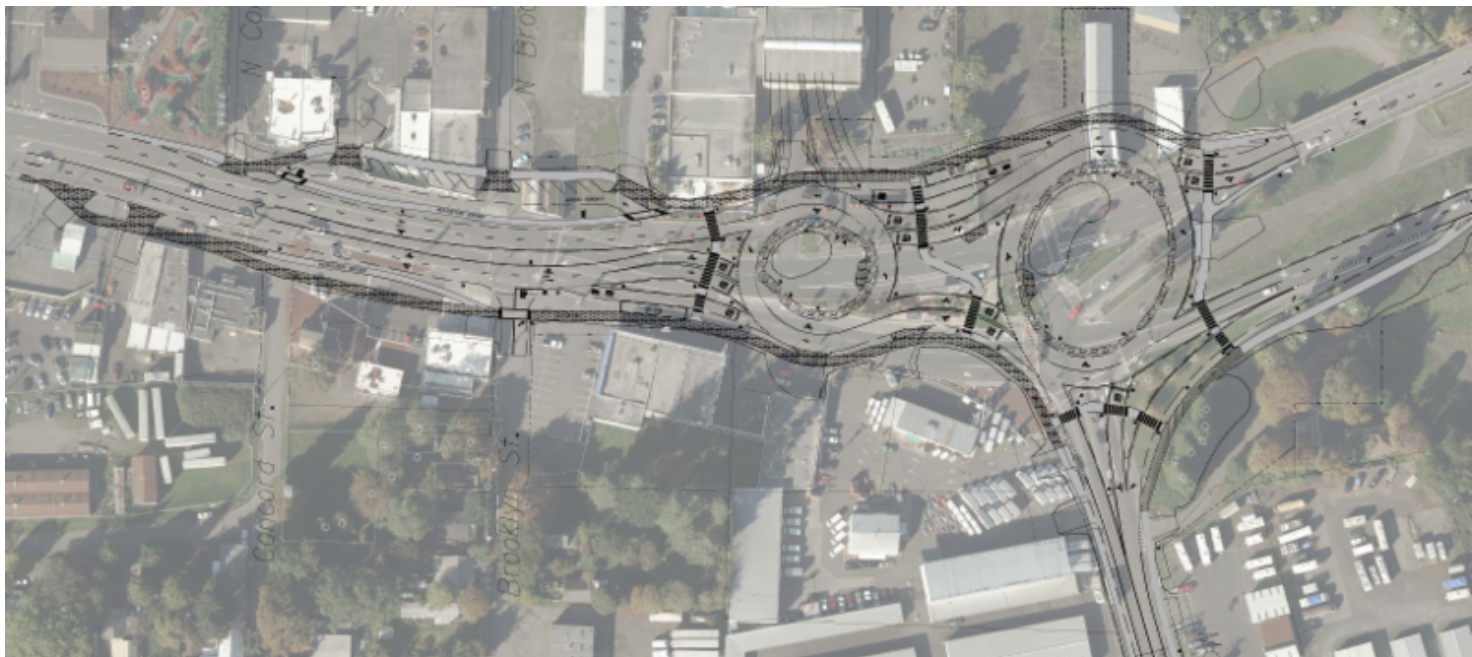




On Pace with Design and Construction Plans

The Franklin Blvd design will reach 90% completion next month. Meanwhile, the process of acquiring the necessary parcels will move forward to keep pace with the goal of beginning construction in late summer or early fall. If you have any questions about the acquisition process or the overall project, please contact Springfield Project Manager, [Kristi Krueger](#).



Click image to view details

Do It Right

Construction costs can be a moving target affected by many things in the economy. So, as a project's design gets closer to completion more accurate costs can be established. New Franklin Blvd aims to begin construction at McVay Hwy late this summer, and has funds to build from McVay Hwy to Mississippi St. Previously, the project hoped to build through the Mississippi Ave intersection, replacing it with a roundabout. Project Manager, Kristi Krueger, said, "We are not cutting back on doing it right to achieve maximum safety. What we build will have complete sidewalks, protected bike lanes, and high quality storm water treatment. It just means we cannot get quite as far down the road until more funding is ready."

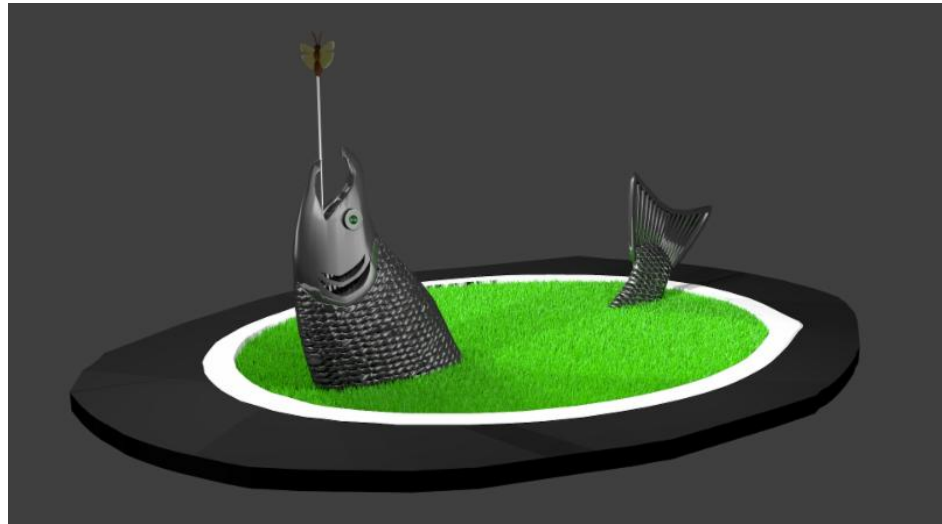
Utilities will be Unified Underground

Utilities provide services from water to TV via cables, pipes and wires above and below us. As Franklin Blvd is constructed, Springfield is coordinating the many utilities to come together in a common underground trench. The advantages include the reduction of maintenance manholes, one-time relocation, and less excavation and repair compared to separate utility locations. When they are well

mapped, they also allow for quick access to all utilities. Expect to see utility relocations underway. This work needs to be completed before road construction begins later this year.

Art in the McVay Roundabout Intersection

It was thiiiiiiiiis big, really! Students at A3 in Springfield are busy designing the artwork for the unique double roundabout designed for the intersection of McVay Hwy and Franklin Blvd. Though originally conceived as having the fish head and tail emerging separately from the two roundabout islands, the span was impractically large. Now the 30 foot high sculpture will be contained in the larger of the two islands.



For more information, view [Franklin Project Overview](#). Your questions and comments are welcome via info@newfranklinblvd.org.



Kristi Krueger, P.E.
Principal Engineer
City of Springfield
541-726-4584
kkrueger@springfield-or.gov

Join Our Mailing List!

This e-update is a great way to stay informed about the project. You will receive them automatically. If you do not want to receive future emails about the New Franklin Blvd project, just send us an email at info@newfranklinblvd.org and we will take you off the list.