



Memorandum

Date: December 18, 2013
To: Kristi Krueger, Principal Engineer, Community Development Division, City of Springfield Development and Public Works Dept.
From: Brad Rawls, Senior Ecologist, URS Corporation
Subject: Special Status Fish and Wildlife Species and Habitats, Franklin Boulevard Design Refinement and Environmental Classification Project

INTRODUCTION

This memorandum documents preliminary findings regarding the presence of species and habitats in the Franklin Boulevard Project's (Project's) Area of Potential Impact (API) protected by special legal status. The principal purpose of the memorandum is to identify legally protected species and habitats that could be impacted by the Project, so that design revisions can be developed to avoid or minimize such impacts, if necessary.

These preliminary findings are based upon a desktop review of existing reports and interpretation of spatial data. Special status species include those protected under the federal Endangered Species Act (ESA), the federal Migratory Bird Treaty Act (MBTA); the federal Bald and Golden Eagle Protection Act (BGEPA), the Oregon Endangered Species Act (OESA), and Oregon's Sensitive Species Rule. Special status habitats include critical habitat, regulated under the federal ESA; Essential Salmonid Habitat (ESH), regulated by the Oregon Department of State Lands (DSL); Essential Fish Habitat (EFH), regulated by the Magnuson-Stevens Fisheries Conservation and Management Act (MSA), migratory bird habitat used during the breeding season, regulated under the MBTA; and known or identified eagle nest or communal roost sites, regulated under the BGEPA. These findings have not been reviewed by any federal or state agencies for concurrence. In summary, preliminary findings include the following:

- Two aquatic habitats are present in the Project API: the Willamette River and Glenwood Slough, which discharges to the Willamette River. The Willamette River provides habitat for three special status aquatic species (fish) and the following special status habitats: ESH, EFH, and critical habitat for three ESA-listed species. Glenwood Slough has no documentation of supporting ESA-listed species, but would still be regulated as critical habitat, ESH, and EFH, due to its hydraulic connection to the Willamette River.
- Terrestrial and avian habitat within the API is heavily urbanized, with limited riparian and natural spaces associated with the Willamette River. Vegetation within the API is likely to provide breeding habitat for migratory birds. Impacts to vegetation used by breeding birds are regulated during the breeding season by the MBTA. No ESA-listed terrestrial species were identified as occurring in the API, nor is there any designated critical habitat for terrestrial species present in the API. No bald eagle nests or communal roosts were identified as occurring in the API.

AREA OF POTENTIAL IMPACT

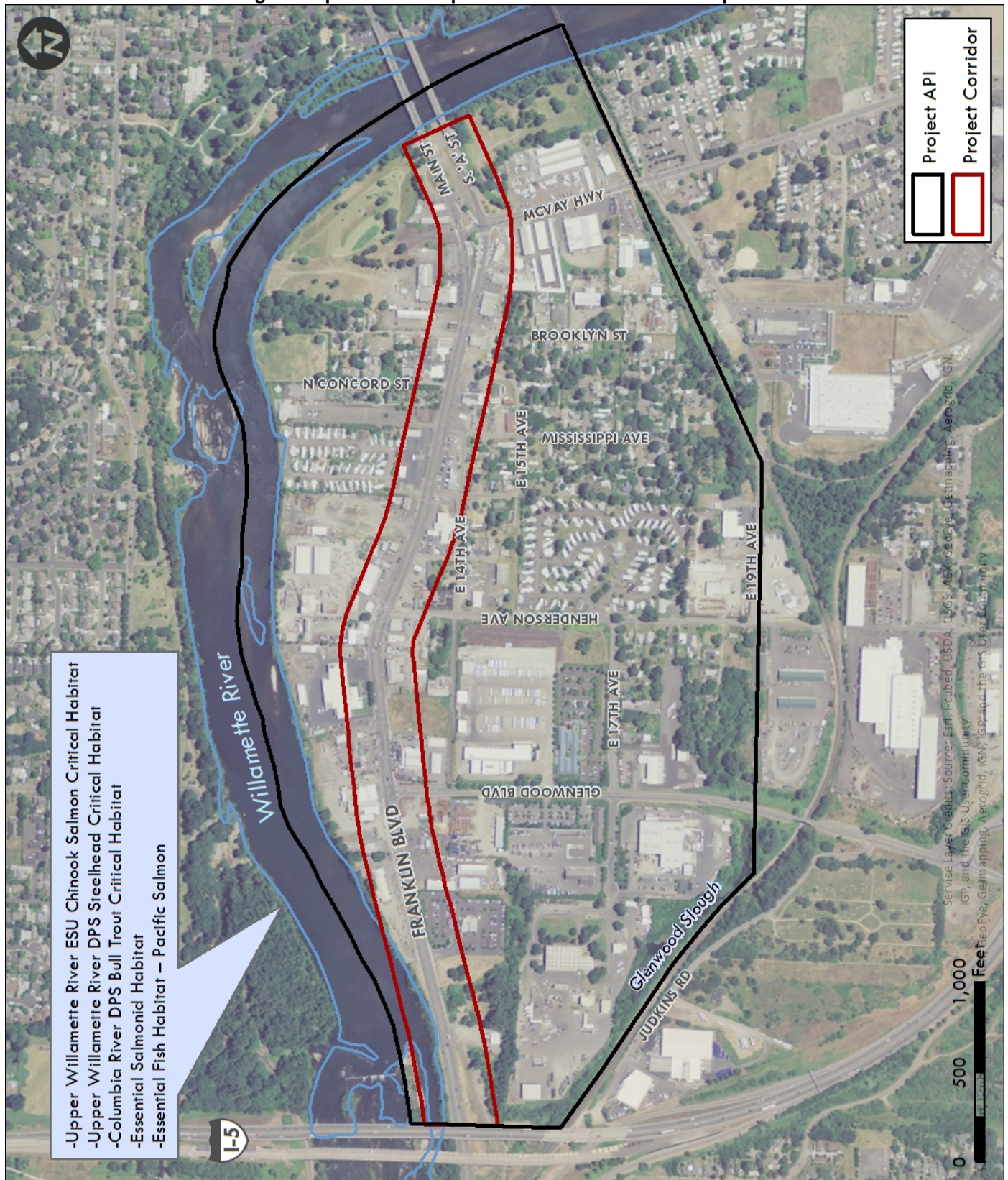
The Biological Resources API is limited to the area where effects resulting from Project construction or operation could occur. For this Project, the API includes the area within the 400-foot-wide Project Corridor, centered on the Franklin Boulevard centerline, and receiving waters draining the Glenwood subbasin, including the southern shoreline of the Willamette River and the Glenwood Slough, as shown in Figure 1.

METHODS

Desktop research was conducted to determine the presence of special status species and habitats within the Project Area and API. Several sources were consulted, including the U.S. Fish and Wildlife Service (FWS) *List of Threatened and Endangered Species that May Occur in the Proposed Project Location*;¹ National

¹ U.S. Fish and Wildlife Service (FWS). 2013. List of threatened and endangered species that may occur in your proposed project location, and/or may be affected by your proposed project. Consultation Tracking Number: 01EOW00-2014-SLI-0017. Oregon Fish and Wildlife Office, Portland, Oregon. Issued November 15, 2013.

Figure 1 Special Status Species & Habitat Resources Map



Oceanic and Atmospheric Administration Fisheries Service (NOAA Fisheries) web resources for protected species;² the Oregon Department Fish and Wildlife (ODFW) Sensitive Species List;³ the Pacific Fisheries Management Council (PFMC) *Identification and Description of Essential Fish Habitat, Adverse Impacts, and Recommended Conservation Measures for Salmon*;⁴ the DSL map of ESH for Lane County, Oregon;⁵ the Oregon Cooperative Fish and Wildlife Research Unit's *Bald Eagle Nest Locations and History of Use in Oregon and Washington*;⁶ recent aerial photography; and publically available geographic information system (GIS) geospatial resources .

EXISTING CONDITIONS

The Project is located in the Glenwood area of Springfield, Oregon, a low-lying area at the bend in the Willamette River between Eugene and downtown Springfield. The API lies within the Upper Willamette River watershed and within the Willamette River's 500-year floodplain. Topography slopes to the north and east toward the river, and elevations range from approximately 420 to 440 feet.⁷ Most of the API contains urban land uses, including commercial, industrial, and residential development along Franklin Boulevard. The majority of the API contains impervious surfaces.

Aquatic Resources and Habitats

The Project API is located within the 1,400 acre Glenwood subbasin. Drainage patterns within the subbasin discharge to two different receiving waters: the Glenwood Slough and the Willamette River. The Glenwood Slough comprises the southern boundary of the API. Approximately 1,300 acres of the subbasin discharge to the Glenwood Slough, with the remaining 100 acres discharging directly to the Willamette River.⁸

Urban development, including placement of fill and construction of stormwater collection and conveyance facilities, has likely affected the historical extent and distribution of water resources that may have previously existed within the API. Currently, there are no documented streams or other watercourses within the API, with the exception of the Willamette River and Glenwood Slough. The Willamette River supports three ESA-listed species: bull trout (*Salvelinus confluentus*), spring and fall run Chinook salmon (*Oncorhynchus tshawytscha*), and summer and winter run steelhead trout (*O. mykiss*).^{9, 10} The Willamette River is regulated as ESH, EFH, and designated critical habitat for the three listed fish species.^{11, 12, 13}

² NOAA Fisheries Service. 2013. West Coast Region Species Lists. http://www.westcoast.fisheries.noaa.gov/protected_species/species_list/species_lists.html. Accessed November 18, 2013.

³ Oregon Department of Fish and Wildlife (ODFW). 2008. Sensitive Species: Frequently Asked Questions and Sensitive Species List. Salem, Oregon.

⁴ Pacific Fishery Management Council (PFMC). 1999. Amendment 14 to the Pacific Coast Salmon Plan. Appendix A: Description and Identification of Essential Fish Habitat, Adverse Impacts and Recommended Conservation Measures for Salmon. August, 1999. Portland, Oregon.

⁵ Oregon Department of State Lands (DSL). 2008. State of Oregon. Department of State Lands. Essential Salmonid Habitat. Lane County. <http://www.oregon.gov/dsl/PERMITS/docs/maps/lane.pdf>. Accessed November 15, 2013.

⁶ Isaacs, Frank B. and Robert G. Anthony. 2007. Bald Eagle Nest Locations and History of Use in Oregon and the Washington Portion of the Columbia River Recovery Zone, 1971 through 2006. Oregon Cooperative Fish and Wildlife Research unit, Department of Fisheries and Wildlife. Oregon State University. Corvallis, Oregon.

⁷ Pacific Habitat Services, Inc. 2005. Local Wetlands Inventory and Riparian Corridor Assessment for the Glenwood Area of Springfield, OR. Prepared for City of Springfield. p. 9.

⁸ Parsons Brinkerhoff. 2013. Water Quality, Franklin Boulevard Design Refinement and Environmental Classification Project. Draft Technical Memorandum. November 13, 2013.

⁹ NOAA Fisheries Service 2013.

¹⁰ FWS 2013.

¹¹ DSL 2008.

¹² PFMC 1999.

Glenwood Slough, while connected to the Willamette River, provides no documented support for ESA-listed fish species, but would be regulated as designated critical habitat, EFH, and ESH, given its open water and unobstructed connection to the Willamette River.

Special status aquatic species are identified in Table 1. Special status aquatic habitats are identified in Table 2.

Terrestrial Resources and Habitats

Terrestrial habitat associated within the API is largely comprised of residential and urban land uses. Habitat is typically confined to small lot landscaping and isolated mature deciduous and coniferous trees. Such habitat provides marginal values to terrestrial and avian species. The largest extant terrestrial habitat is located at the east end of the Project API, associated with riparian open space abutting the Willamette River. Review of aerial photography indicates that this area includes open grasslands, mature riparian deciduous trees, and isolated mature coniferous trees. Additionally, the riparian fringe along the south shoreline of the Willamette River and narrow riparian zone associated with the Glenwood Slough offer contiguous and established terrestrial and avian habitats. These areas are likely to support numerous avian species protected under the MBTA. Consequently, Project activities that would remove breeding habitat or disturb breeding behavior during the breeding season would be regulated by the MBTA. The breeding season for the API would typically run from April through August, annually.

No specific data was found indicating the presence of special status species within the API. However, habitat suitable for use by special status species may exist within the API, particularly for ESA-listed botanical species. Additional investigation would need to be conducted to determine potential species presence or habitat suitability. No ESA-designated critical habitat for botanical species occurs within the API.

No bald eagle nests or communal roost sites are noted within the Project Corridor or API, but nests are documented as occurring nearby in the McKenzie River sub-basin and at Fern Ridge Reservoir.¹⁴ Consequently, bald eagles may use the Willamette River for forage habitat and potentially use the riparian habitat along the river's edge within the API for perching and foraging.

Special status terrestrial species are identified in Table 1. Special status terrestrial habitats are identified in Table 2.

¹³ NOAA Fisheries Service 2013.

¹⁴ Isaacs and Anthony 2007.

Table 1. Special Status Species Potentially Occurring in the Project API, the Project Area, and in Proximity to the Project Area

Species Name	Scientific Name	Protective Regulations	Occurs in Project API	Occurs in Project Corridor
Bald Eagle	<i>Haliaeetus leucocephalus</i>	BGEPA; MBTA	No Documented Nesting/Roosting Sites	No Documented Nesting/Roosting Sites
Bradshaw's Desert-parsley	<i>Lomatium bradshawii</i>	FESA – Endangered	No Documented Occurrence	No Documented Occurrence
Bull Trout	<i>Salvelinus confluentus</i>	FESA – Threatened; OESA – SC	Yes, Willamette River	Yes, Willamette River, west end of corridor
Chinook Salmon Upper Willamette ESU	<i>Oncorhynchus tshawytscha</i>	FESA – Threatened; OESA – SC; MSA	Yes, Willamette River	Yes, Willamette River, west end of corridor
Kincaid's Lupine	<i>Lupinus sulphureus ssp. kincaidii</i>	FESA – Threatened	No Documented Occurrence	No Documented Occurrence
Fender's Blue Butterfly	<i>Icaricia icarioides fenderi</i>	FESA – Endangered	No Documented Occurrence	No Documented Occurrence
Marbled Murrelet	<i>Brachyramphus marmoratus</i>	FESA – Threatened	No, No Suitable Habitat	No, No Suitable Habitat
Northern Spotted Owl	<i>Strix occidentalis caurina</i>	FESA – Threatened	No, No Suitable Habitat	No, No Suitable Habitat
Oregon Chub	<i>Oregonichthys crameri</i>	FESA – Threatened; OESA – SC	No, No Suitable Habitat	No, No Suitable Habitat
Oregon Silverspot Butterfly	<i>Speyeria zerene hippolyta</i>	FESA – Threatened	No Documented Occurrence	No Documented Occurrence
Streaked Horned Lark	<i>Eremophila alpestris strigata</i>	FESA – Threatened	No Documented Occurrence	No Documented Occurrence
Steelhead Trout Upper Willamette DPS	<i>Oncorhynchus mykiss</i>	FESA – Threatened; OESA - SV	Yes, Willamette River	Yes, Willamette River, west end of corridor
Willamette Daisy	<i>Erigeron decumbens var. decumbens</i>	FESA – Endangered	No Documented Occurrence	No Documented Occurrence
Yellow-Billed Cuckoo	<i>Coccyzus americanus</i>	FESA – Threatened	No Documented Occurrence	No Documented Occurrence

Sources:

FWS 2013; NOAA Fisheries. 2012. Status of ESA Listings & Critical Habitat Designations for West Coast Salmon & Steelhead. Updated October 31, 2012.

http://www.westcoast.fisheries.noaa.gov/publications/protected_species/salmon_steelhead/status_of_esa_salmon_listings_and_ch_designations_map.pdf.

Accessed November 17, 2013.

ESU = Evolutionarily Significant Unit; DPS = Distinct Population Segment; BGEPA = Bald and Golden Eagle Protection Act ; FESA = Federal Endangered Species Act; MBTA = Migratory Bird Treaty Act; MSA = Magnuson-Stevens Fisheries Conservation and Management Act; OESA = Oregon Endangered Species Act: SC = Sensitive Critical; SV = Sensitive Vulnerability

Table 2. Special Status Habitats Potentially Occurring in the Project API, the Project Area, and in Proximity to the Project Area

<i>Habitat Name / Designation</i>	Regulating Entity	Occurs in Project API	Occurs in Project Corridor
<i>Bull Trout Critical Habitat</i>	FWS	Yes, Willamette River & Glenwood Slough	Yes, Willamette River, west end of corridor; Glenwood Slough
<i>Chinook Salmon Critical Habitat</i>	NOAA Fisheries	Yes, Willamette River & Glenwood Slough	Yes, Willamette River, west end of corridor; Glenwood Slough
<i>Kincaid's Lupine Critical Habitat</i>	FWS	No	No
<i>Fender's Blue Butterfly Critical Habitat</i>	FWS	No	No
<i>Marbled Murrelet Critical Habitat</i>	FWS	No	No
<i>Northern Spotted Owl Critical Habitat</i>	FWS	No	No
<i>Oregon Chub Critical Habitat</i>	FWS	No	No
<i>Oregon Silverspot Butterfly</i>	FWS	No	No
<i>Steelhead Trout</i>	NOAA Fisheries	Yes, Willamette River & Glenwood Slough	Yes, Willamette River, west end of corridor; Glenwood Slough
<i>Willamette Daisy</i>	FWS	No	No
<i>Essential Fish Habitat – Pacific Salmon</i>	NMFS	Yes, Willamette River & Glenwood Slough	Yes, Willamette River, west end of corridor; Glenwood Slough
<i>Essential Salmonid Habitat</i>	DSL	Yes, Willamette River & Glenwood Slough	Yes, Willamette River, west end of corridor; Glenwood Slough

Sources:

FWS 2013; NOAA Fisheries 2012; PFMC 1999; DSL 1998.

FWS = U.S. Fish & Wildlife Service; NMFS = National Marine Fisheries Service; DSL = Oregon Department of State Lands